

CEL-FI GO QUICK START GUIDE

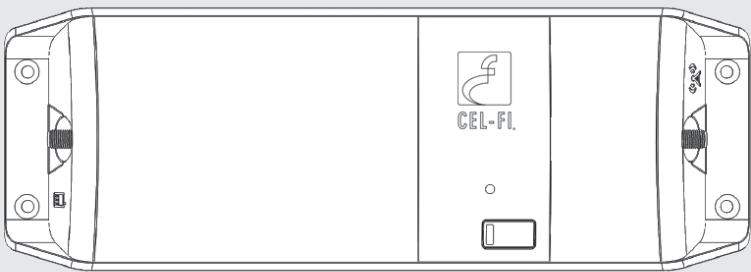
MOBILE VERSION



GO

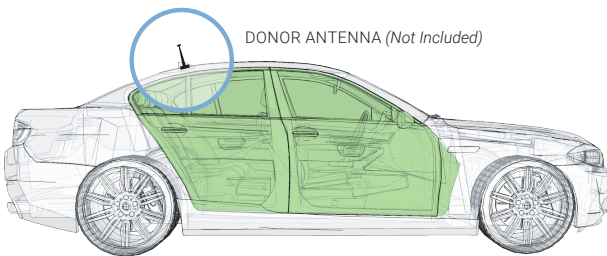
Smart Signal Booster™

CEL-FI GO is an evolved cellular signal booster design that can amplify cellular signals up to 70 dB. Connect a single Donor Antenna to receive the macro-network signals, and then a single indoor Service Antenna where you need service, and **CEL-FI GO** will do the rest automatically.



qsg_GO-mobile-ENG_15-1209

1 Install Donor Antenna

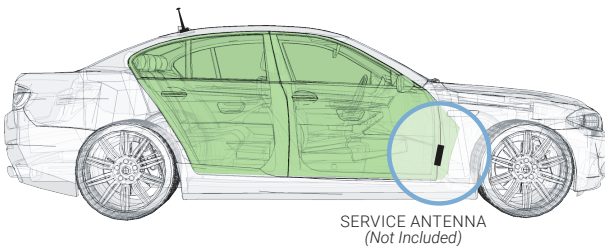


Mount your Donor Antenna on the exterior of the vehicle, towards the rear, according to its design, and the type of vehicle it's being used with. Make sure you consider the cable connection to the **CEL-FI GO** unit with your location choice.



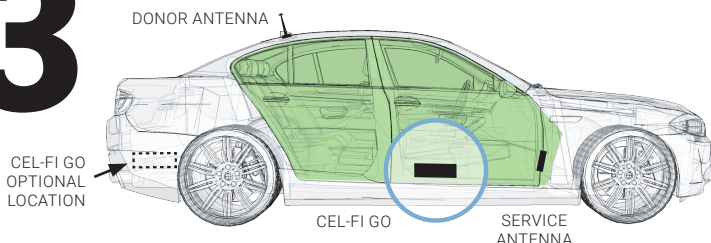
For best performance make sure there is 50cm of metal plane around the base of the antenna.

2 Install Service Antenna



Install **Service Antenna** in the cab, towards the front, where coverage is needed. Ideally, there should be substantial material, like the metal of the roof, between the Donor and Service antennas, to improve isolation.

3 Mount CEL-FI GO



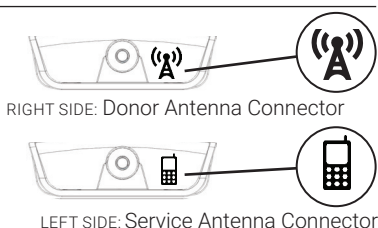
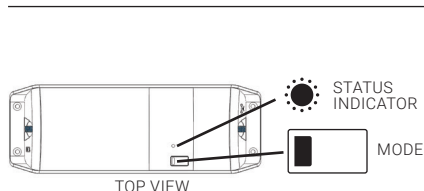
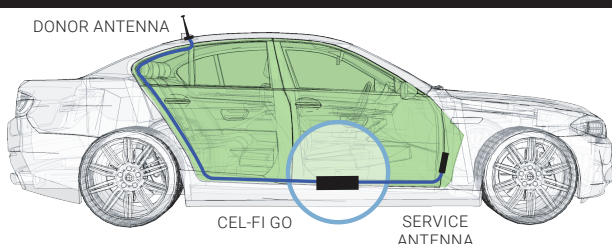
Find a good mounting location in your vehicle. Location should have some airflow, and be safe from bumps and external objects.

Best to make sure all cable lengths support the intended mounting location BEFORE permanent mounting.

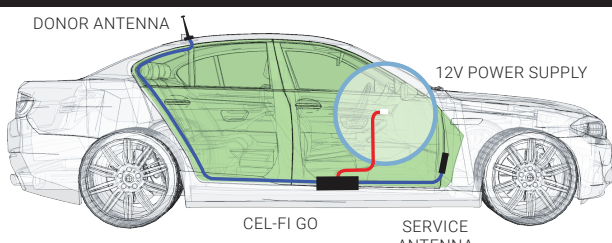
Make sure the unit is within cable range of the 12V power supply on your vehicle.

DO NOT plug in at this time.

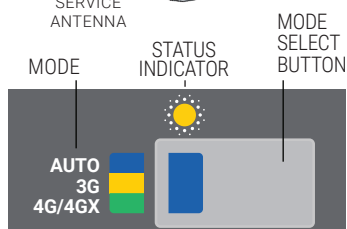
4 Connect Donor & Service Antennas to the CEL-FI GO Unit



5 Plug in CEL-FI GO & Select Mode



Press the **MODE** button on the unit to select desired scanning mode. Status Indicator will blink during the setup process, and may take a few minutes to complete.



(OPTIONAL: use your smartphone to select mode. Download the **CEL-FI WAVE app**, and follow the on-screen instructions.)

STATUS INDICATOR
 ● Boosting 3G
 ● Boosting 4G
 ● Error*

(*NOTE: if Error, go to troubleshooting at cel-fi.com/support)

6 Tips & Tricks

- Keep **Donor** and **Service antennas** separated/isolated from each other for best performance
- Do not use cable splitters for antennas
- For best performance, the cable between the Donor Antenna and GO unit should be as short as possible
- Use sealant if any connections are exposed to elements

7 CEL-FI WAVE

For more CEL-FI GO features, go to **App Store** or **Google play** and download the mobile **CEL-FI WAVE app**.

(NOTE: If you do not have a compatible smartphone, go to cel-fi.com/wave to download the Desktop app.)

